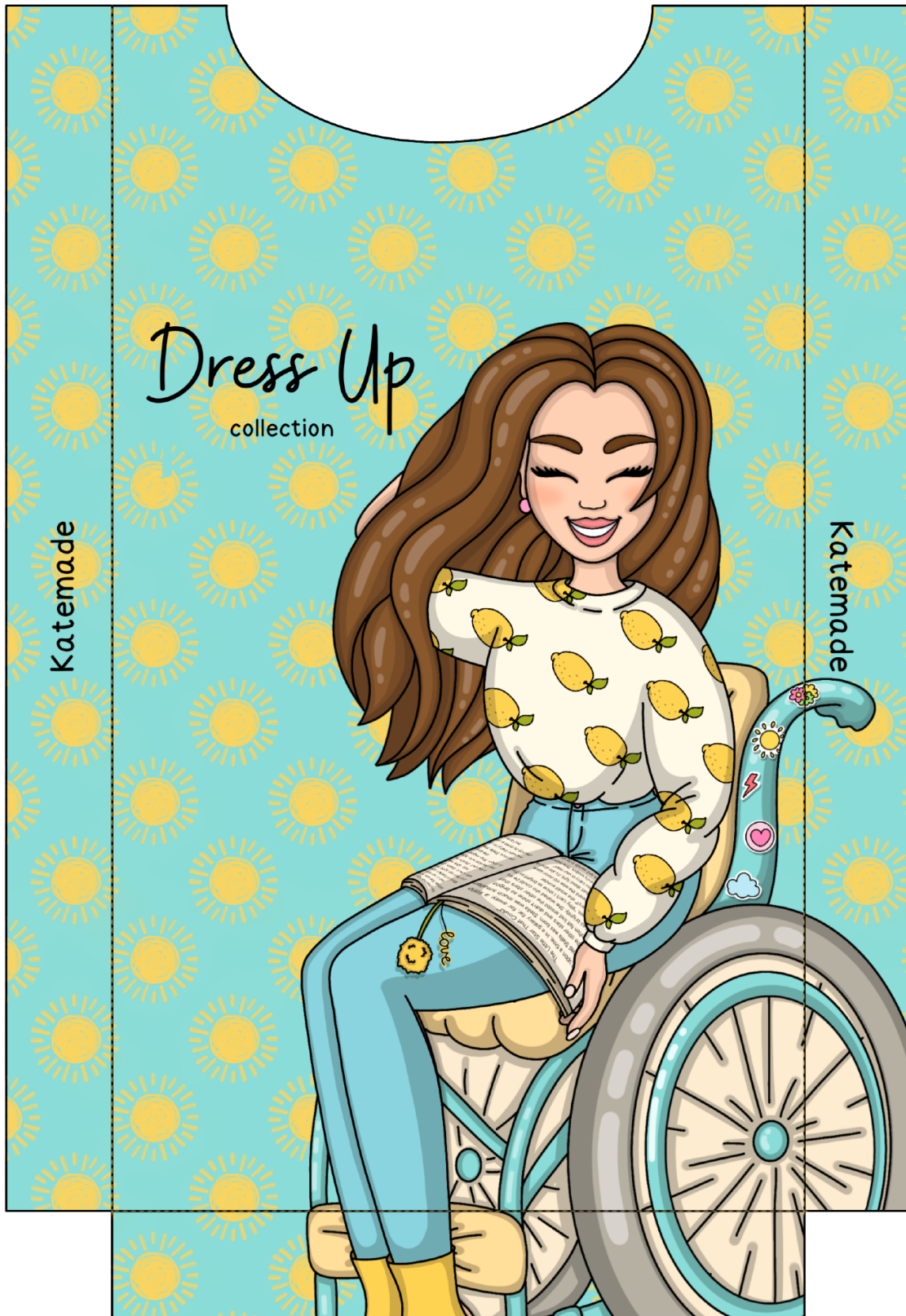




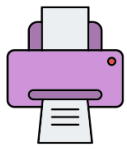
For best results, print this page on 170-220gsm matte photo paper



Please cut out this detail, but remember not to laminate it.



See the yellow dashed lines? They're your folding guides. Use a sharp object and a ruler for a precise fold.



For best results, print this page on 170-220gsm matte photo paper



Please cut out this detail, but remember not to laminate it.

Glue



Name: .....



Favorite color:  
.....

Favorite food:  
.....

Favorite book:  
.....

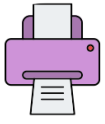
Most loved hobby:  
.....

Biggest dream:  
.....

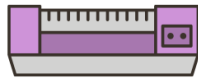
One superpower you wish to have:  
.....  
.....

Glue

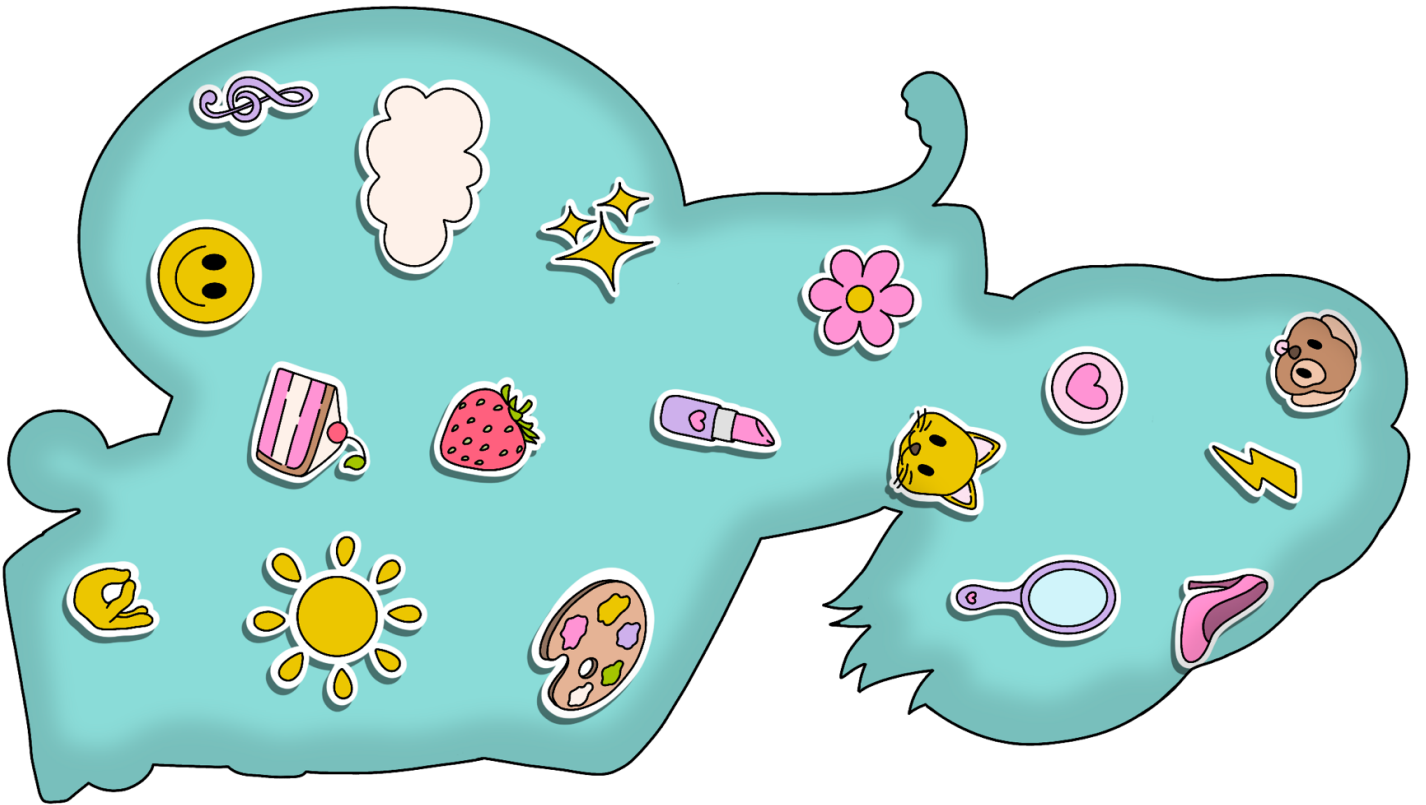
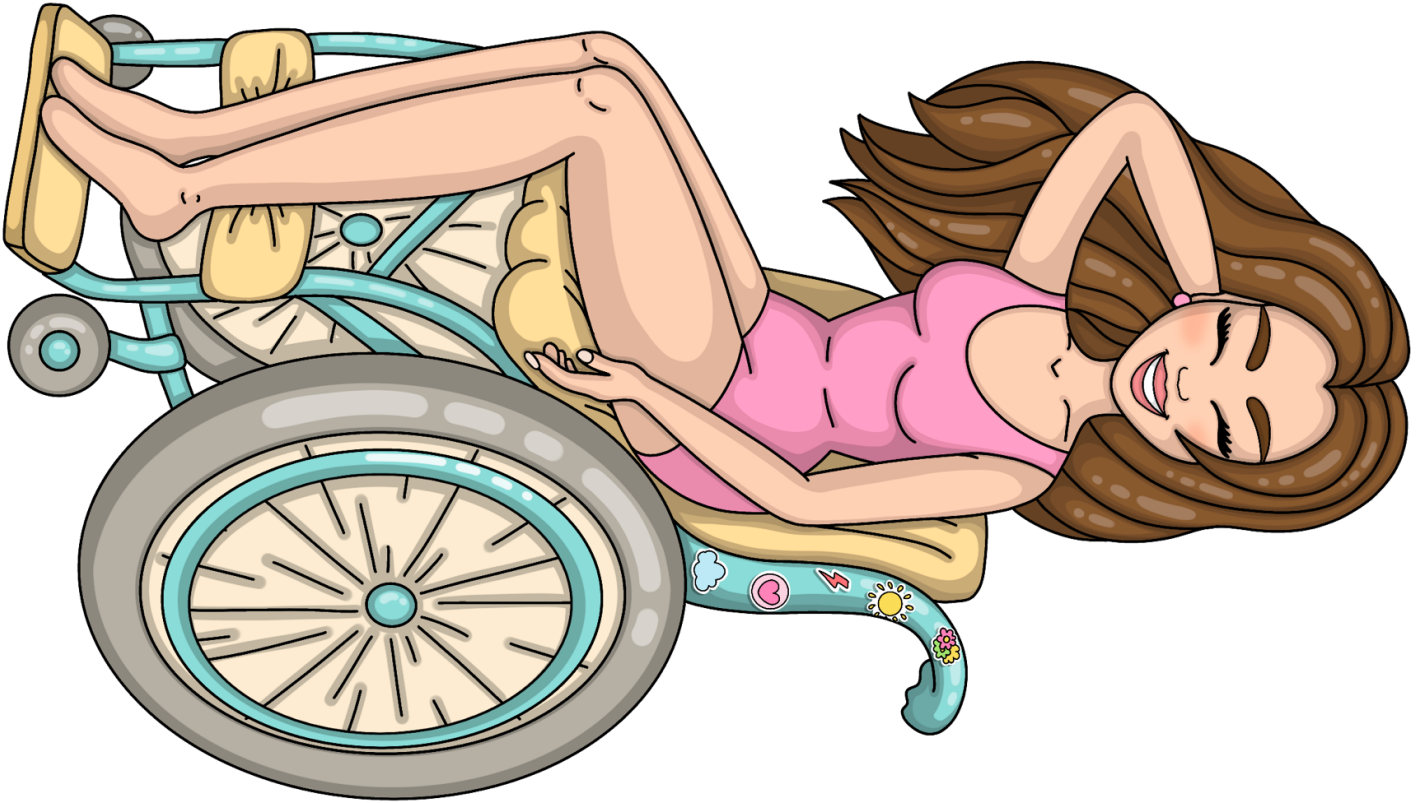
---  
See the yellow dashed lines? They're your folding guides.  
Use a sharp object and a ruler for a precise fold.



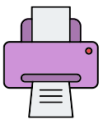
For best results, print this page on 170-220gsm matte photo paper



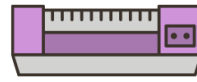
Please cut out and laminate the parts on this page for durability.



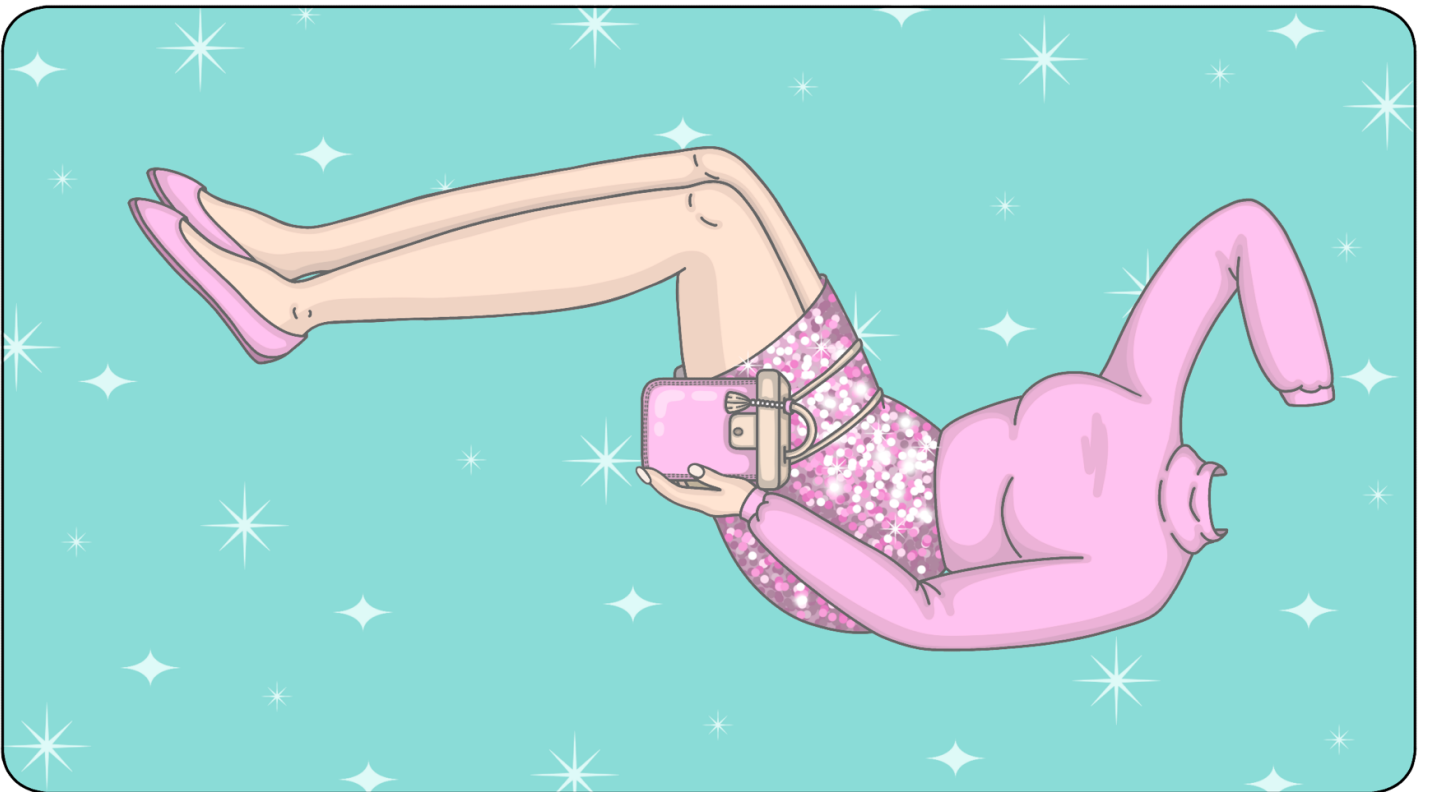
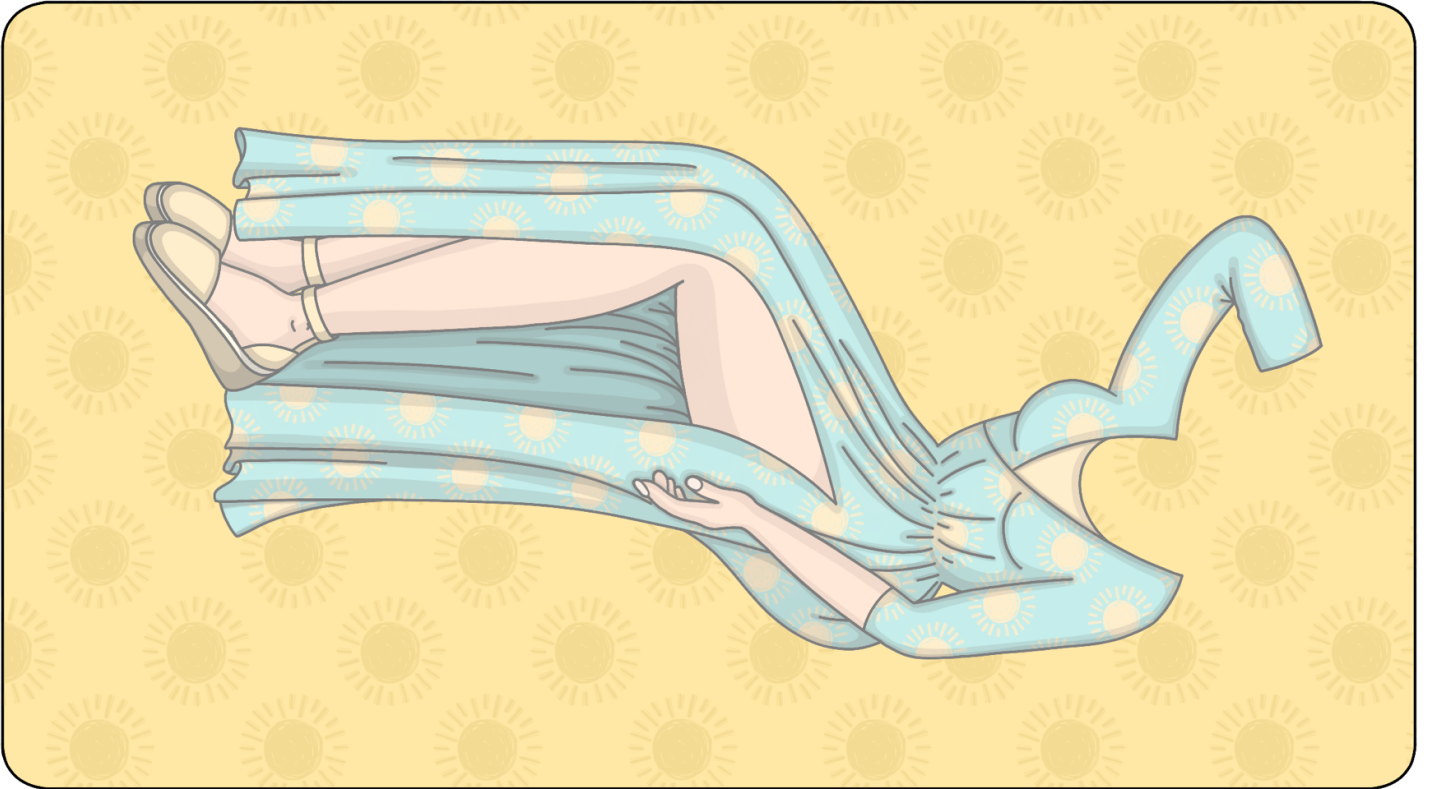
To bring your doll to life, use craft glue or double-sided tape to stick the front and back together. For a 3D effect, use double-sided foam tape.



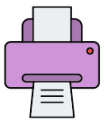
For best results, print this page on 170-220gsm matte photo paper



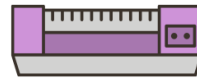
Please cut out and laminate the parts on this page for durability.



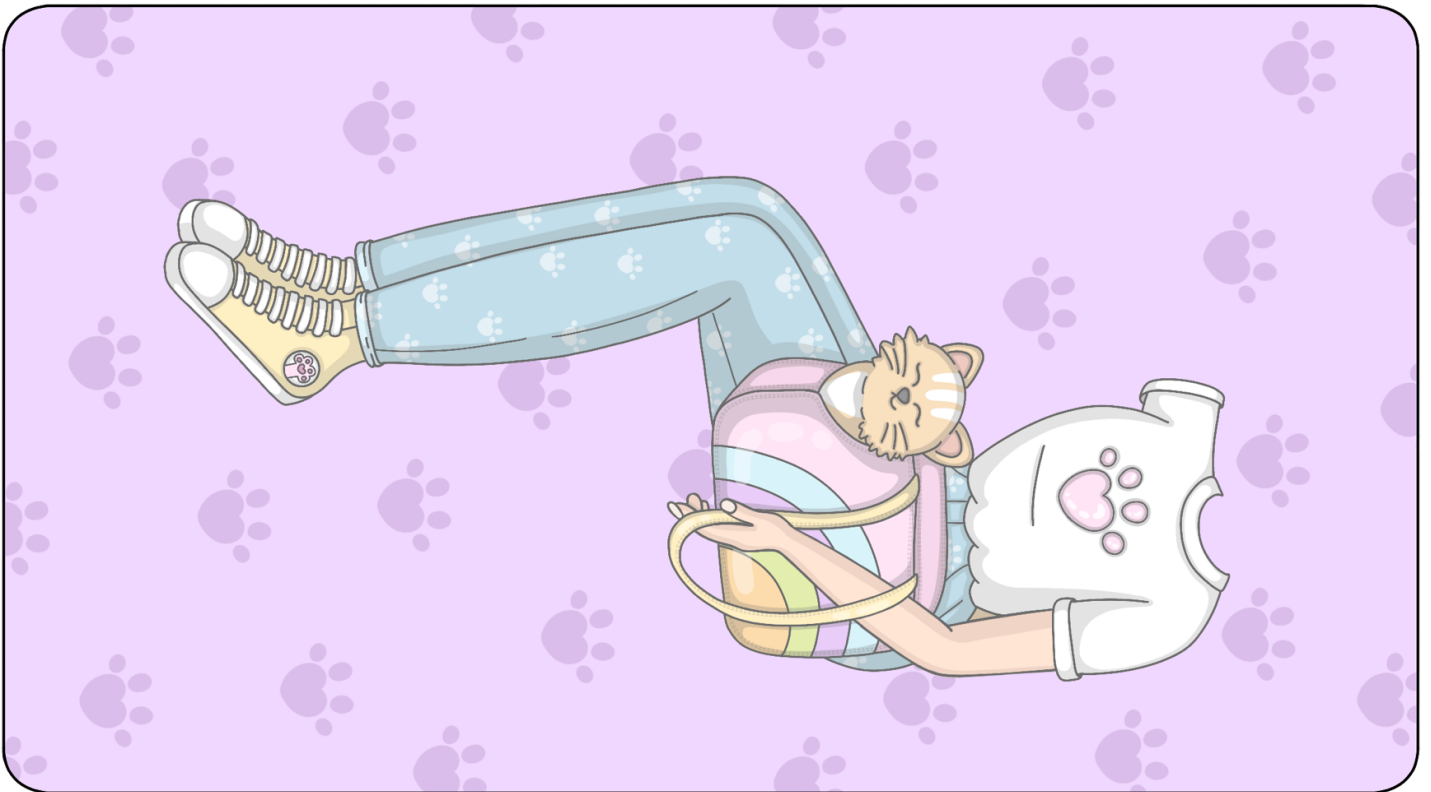
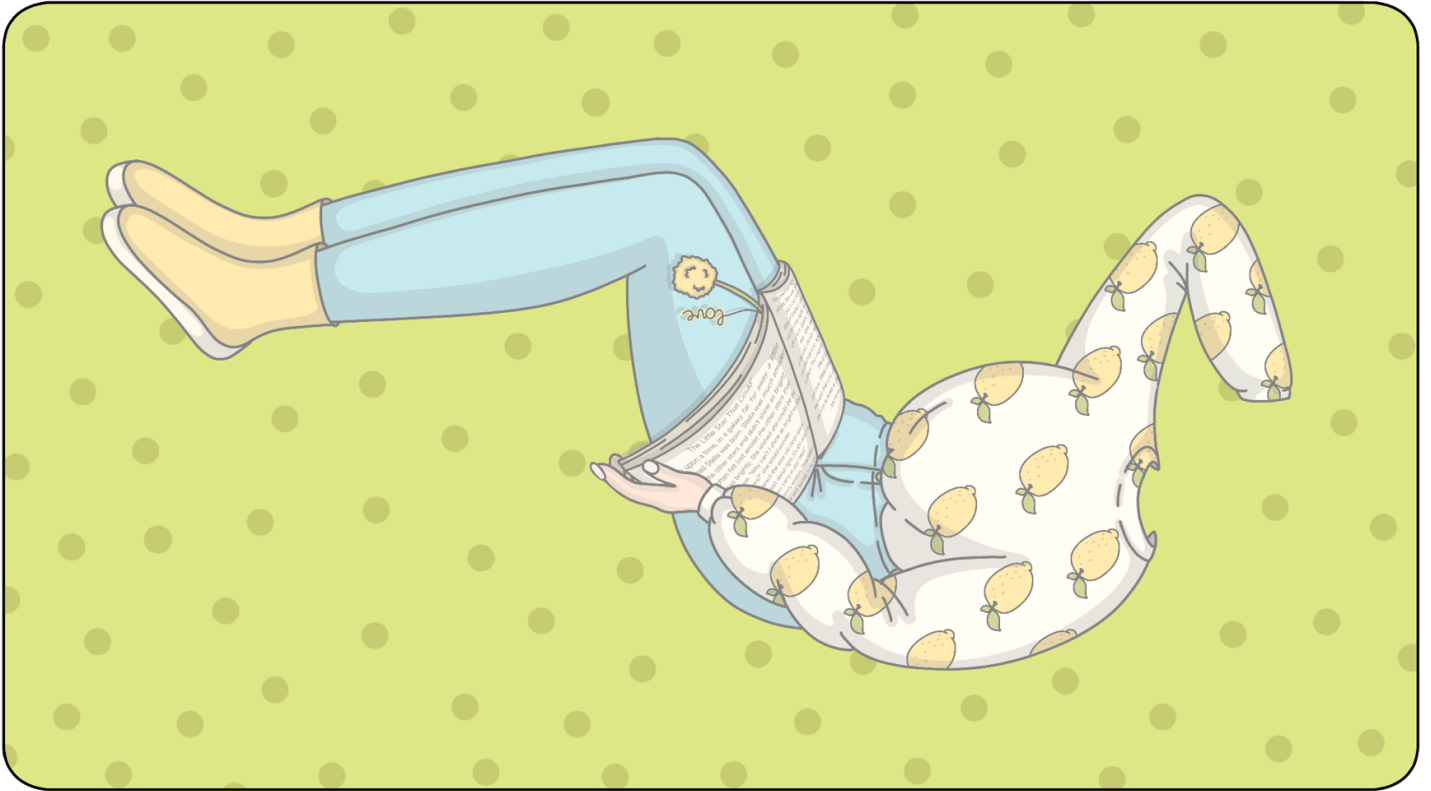
To stick the clothes to the background and doll, use double-sided tape or Velcro.



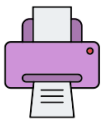
For best results, print this page on 170-220gsm matte photo paper



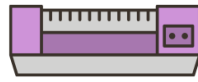
Please cut out and laminate the parts on this page for durability.



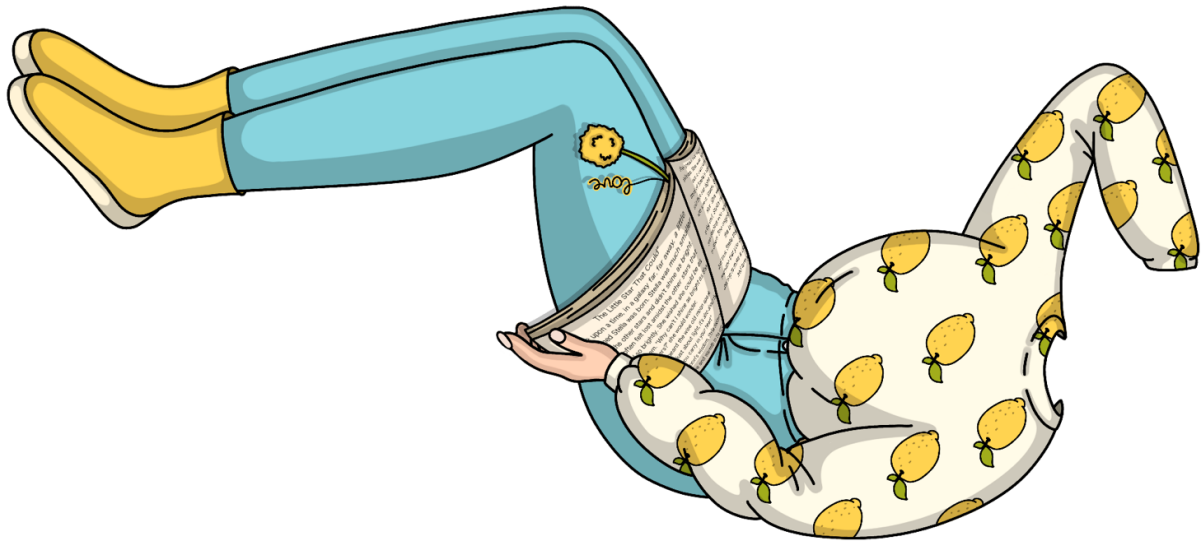
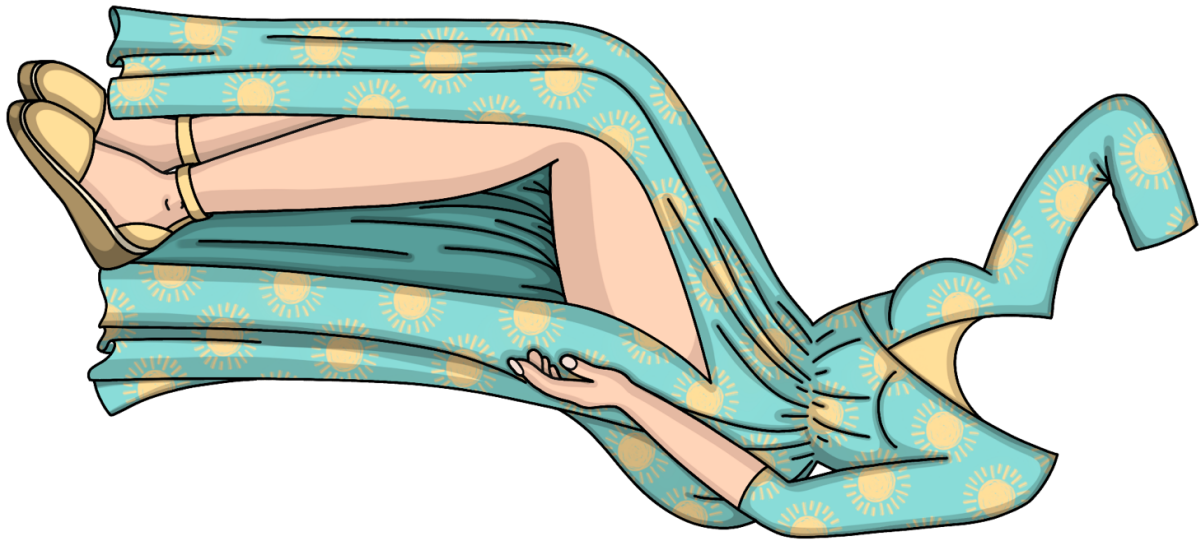
To stick the clothes to the background and doll, use double-sided tape or Velcro.



For best results, print this page on 170-220gsm matte photo paper



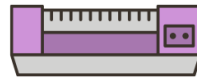
Please cut out and laminate the parts on this page for durability.



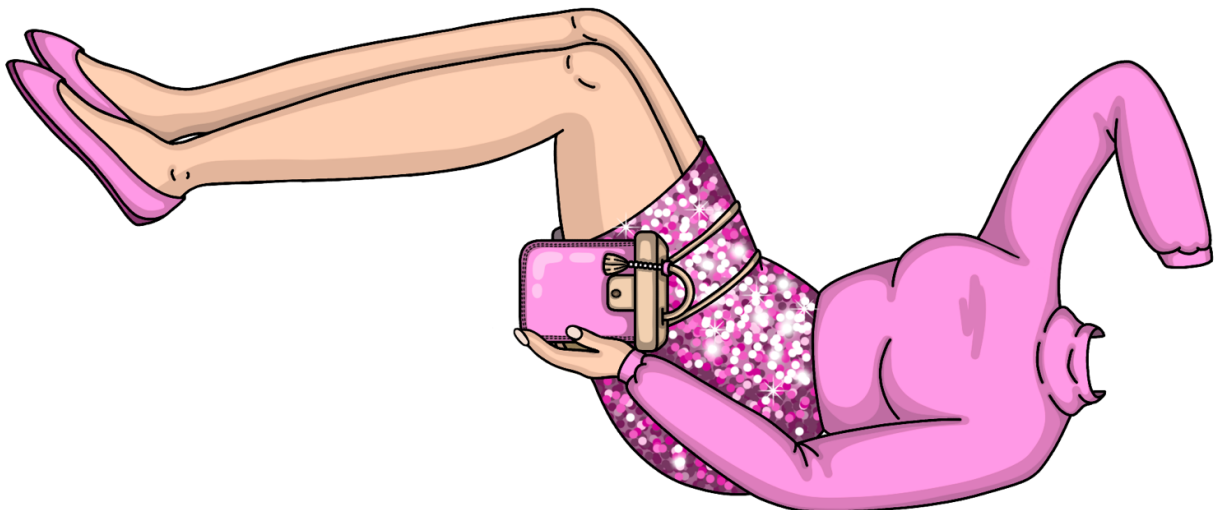
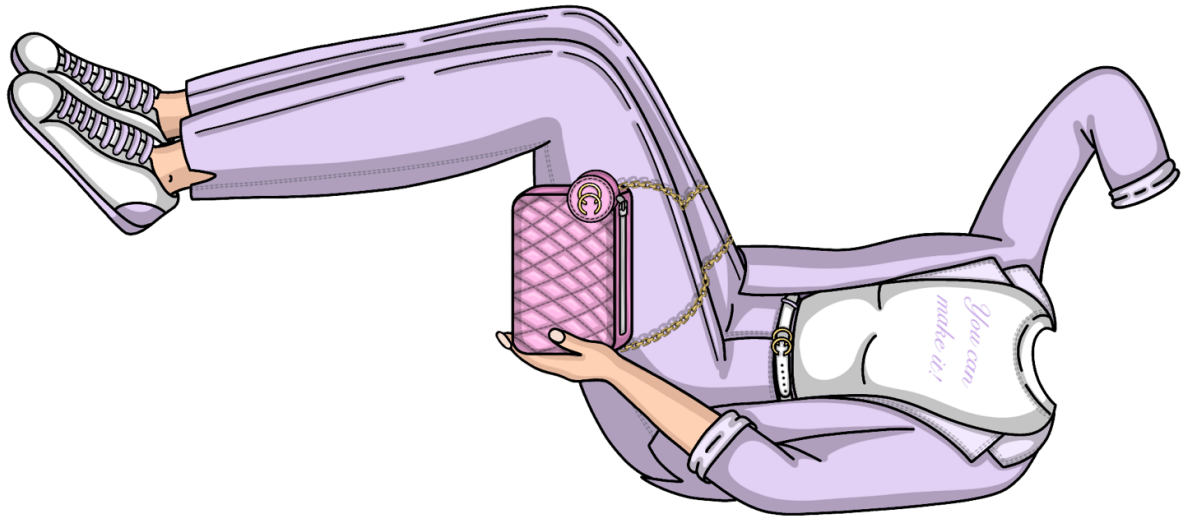
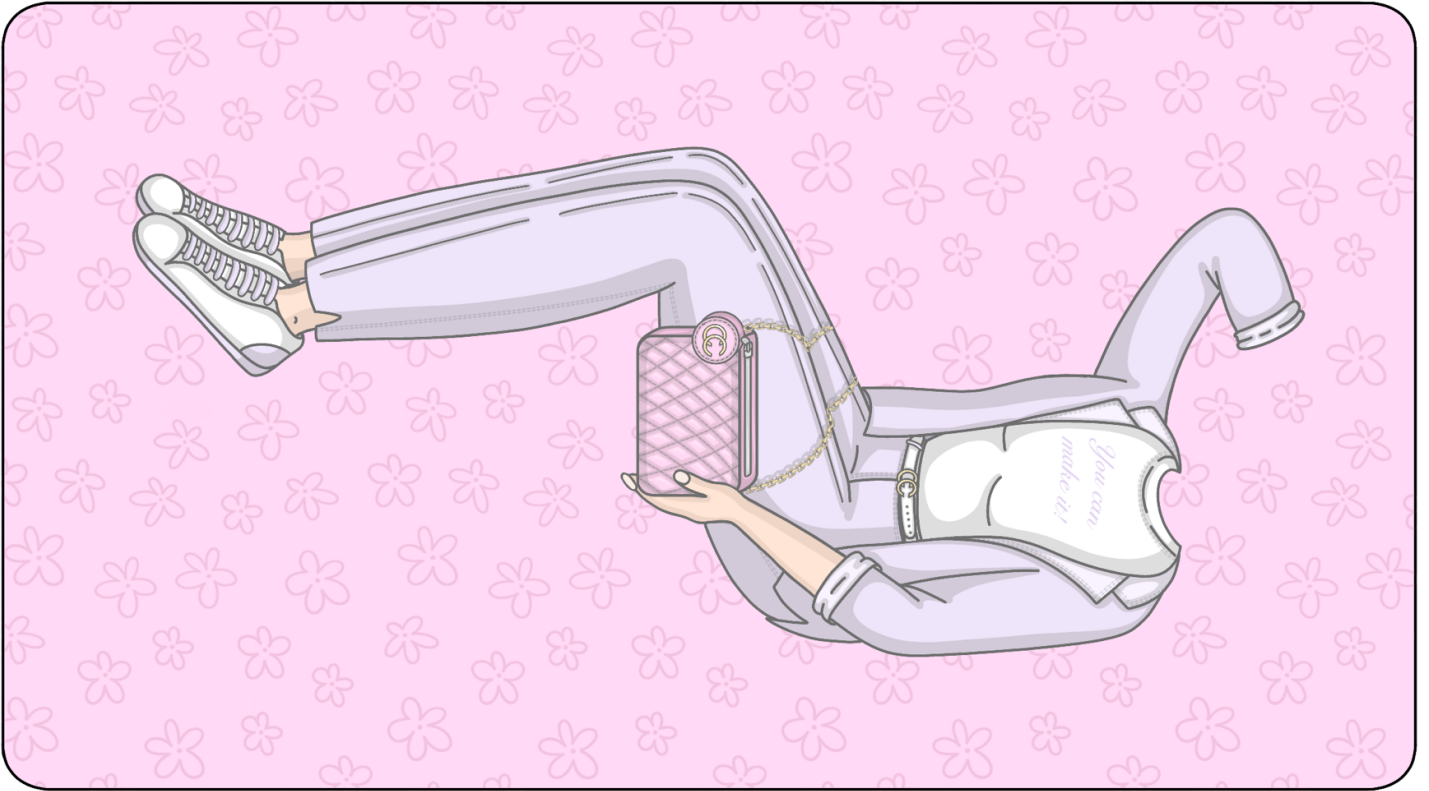
To stick the clothes to the background and doll, use double-sided tape or Velcro.



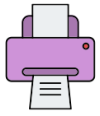
For best results, print this page on 170-220gsm matte photo paper



Please cut out and laminate the parts on this page for durability.



To stick the clothes to the background and doll, use double-sided tape or Velcro.



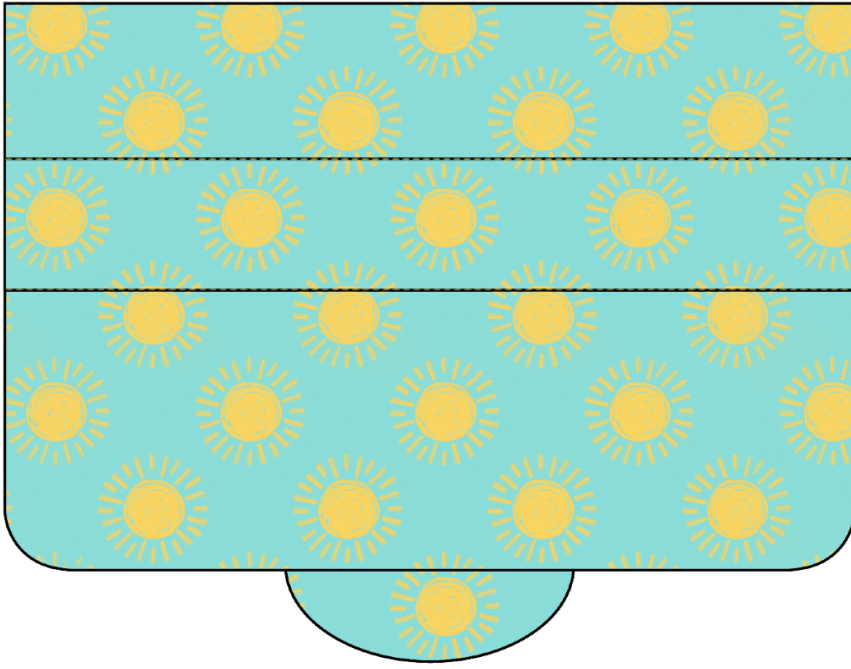
For best results, print this page on 170-220gsm matte photo paper



Please cut out this detail, but remember not to laminate it.



See the yellow dashed lines? They're your folding guides. Use a sharp object and a ruler for a precise fold.



KATE  
MADE<sup>©</sup>

**Usage Terms:** These illustrations are copyright protected, meant solely for your personal enjoyment. Please note, any commercial use, resale, or distribution in any form is legally prohibited.