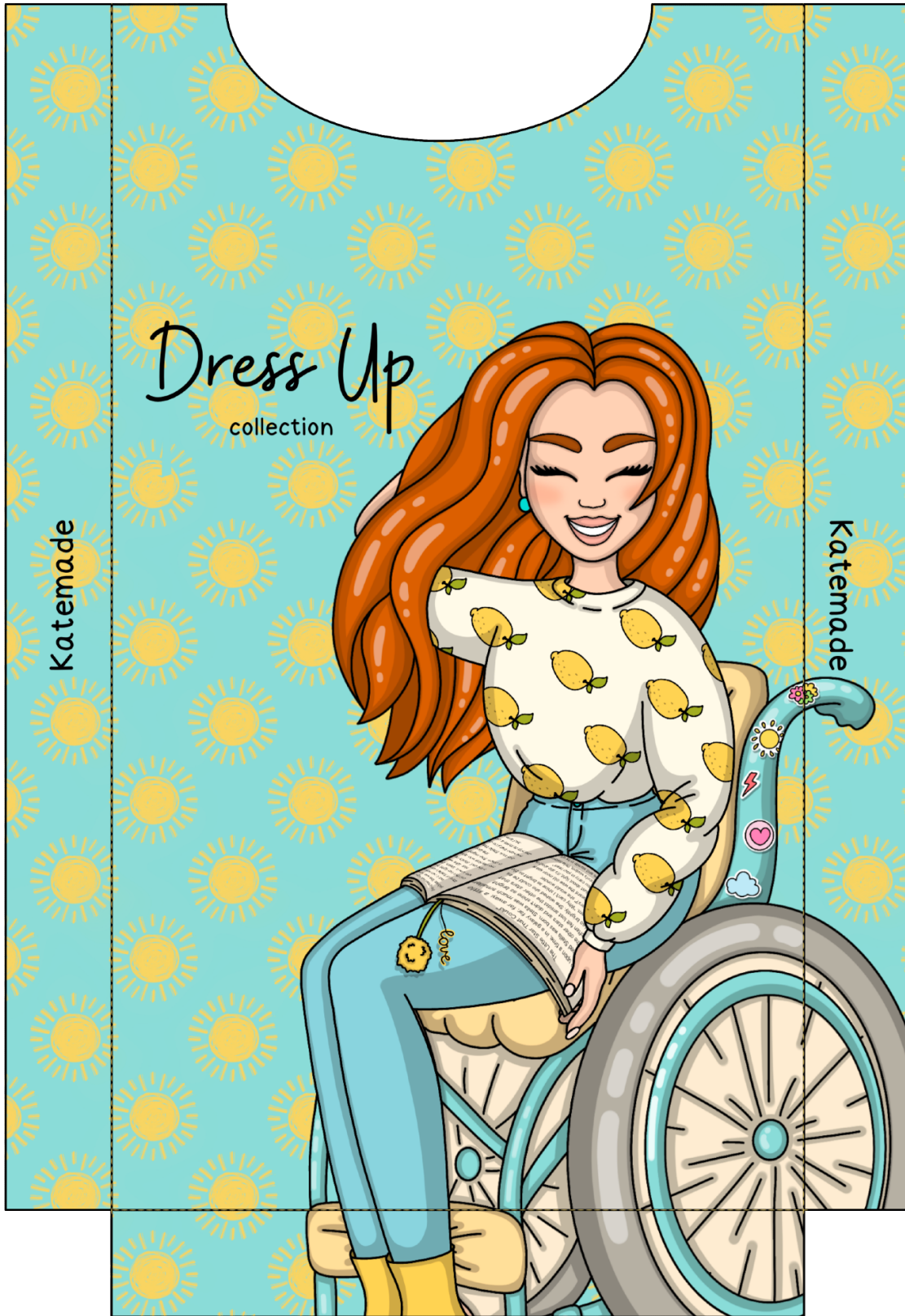


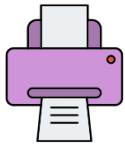
For best results, print this page on 170-220gsm matte photo paper



Please cut out this detail, but remember not to laminate it.



See the yellow dashed lines? They're your folding guides. Use a sharp object and a ruler for a precise fold.



For best results, print this page on 170-220gsm matte photo paper



Please cut out this detail, but remember not to laminate it.

Glue

Name:




Favorite color:

Favorite food:

Favorite book:

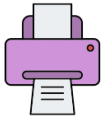
Most loved hobby:

Biggest dream:

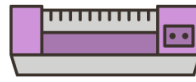
One superpower you wish to have:

Glue

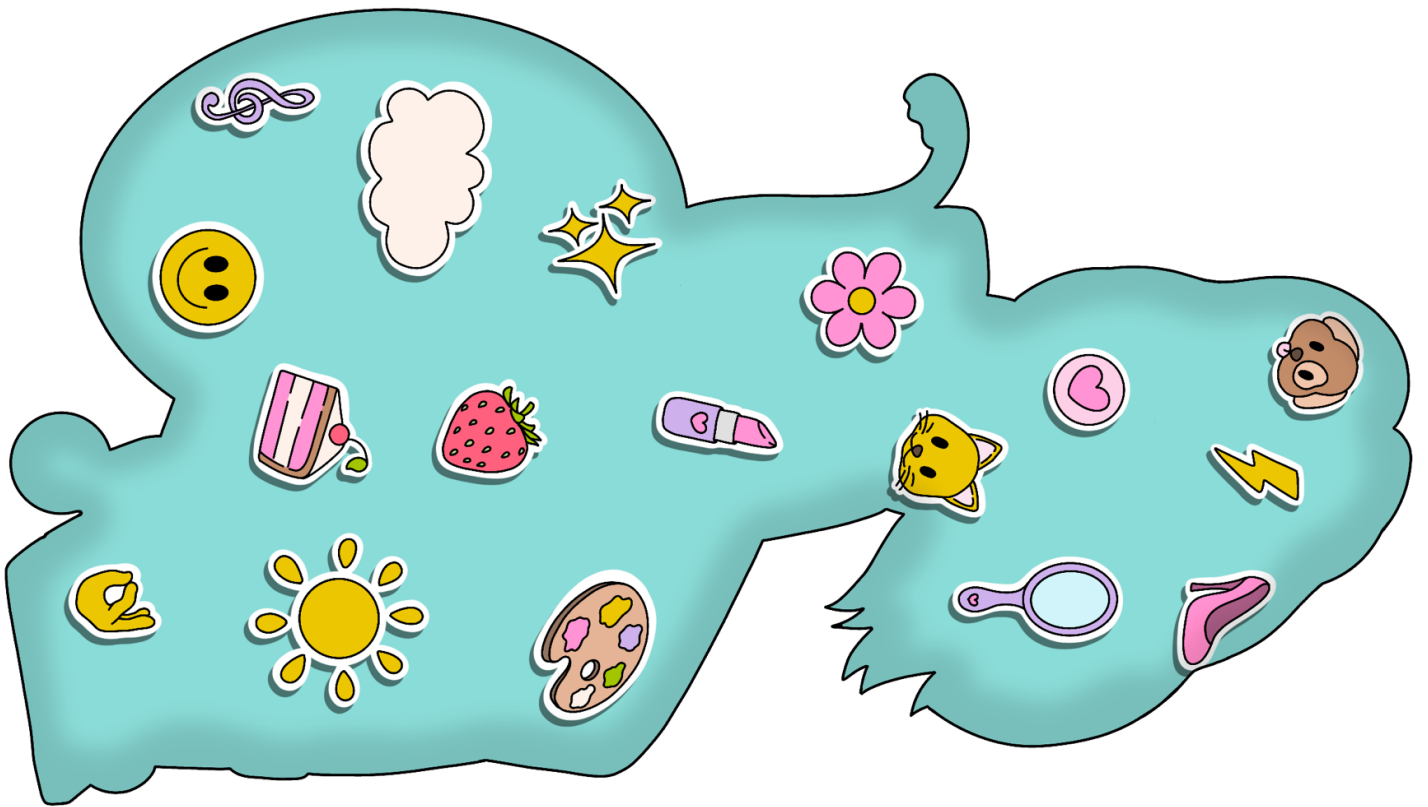
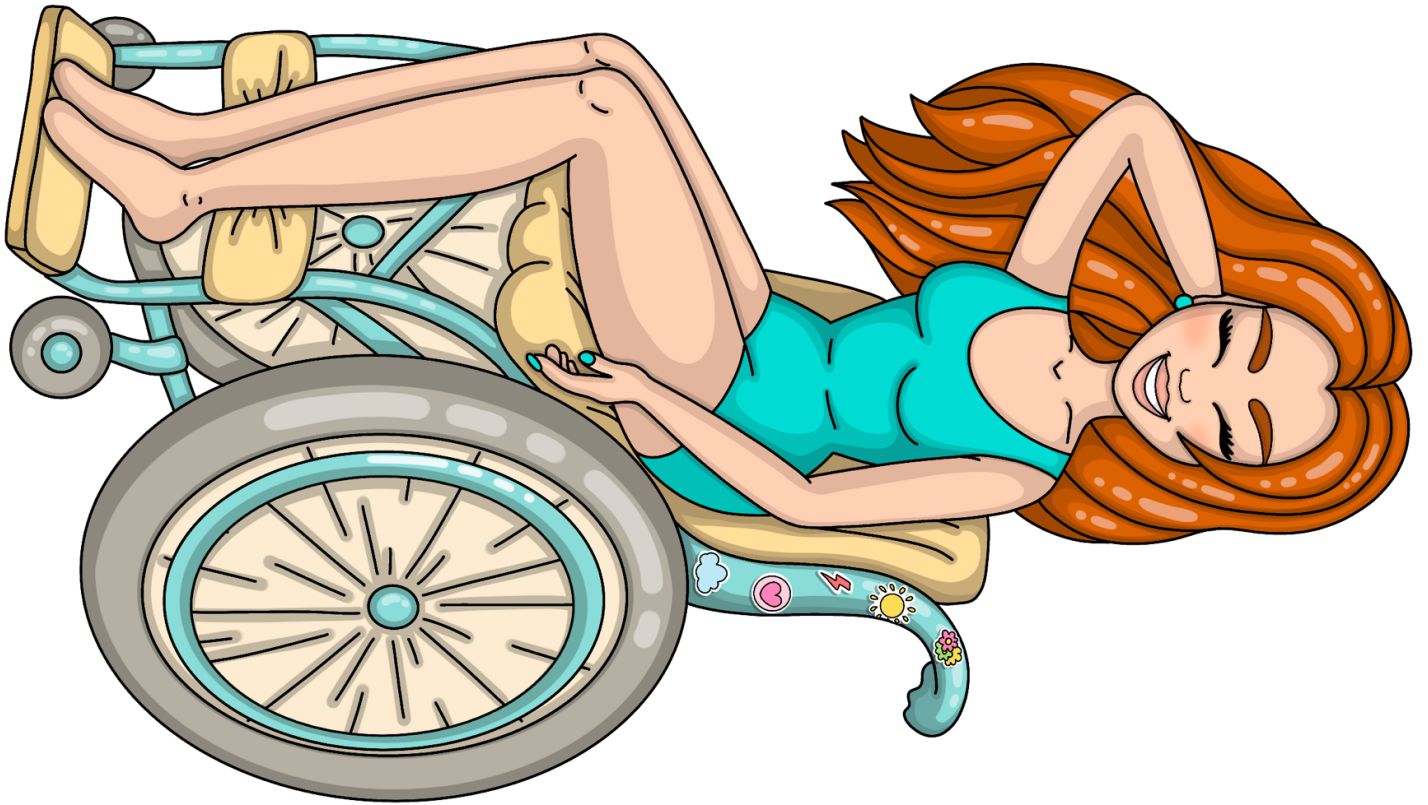
See the yellow dashed lines? They're your folding guides.
Use a sharp object and a ruler for a precise fold.



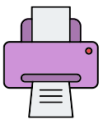
For best results, print this page on 170-220gsm matte photo paper



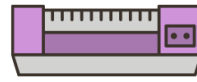
Please cut out and laminate the parts on this page for durability.



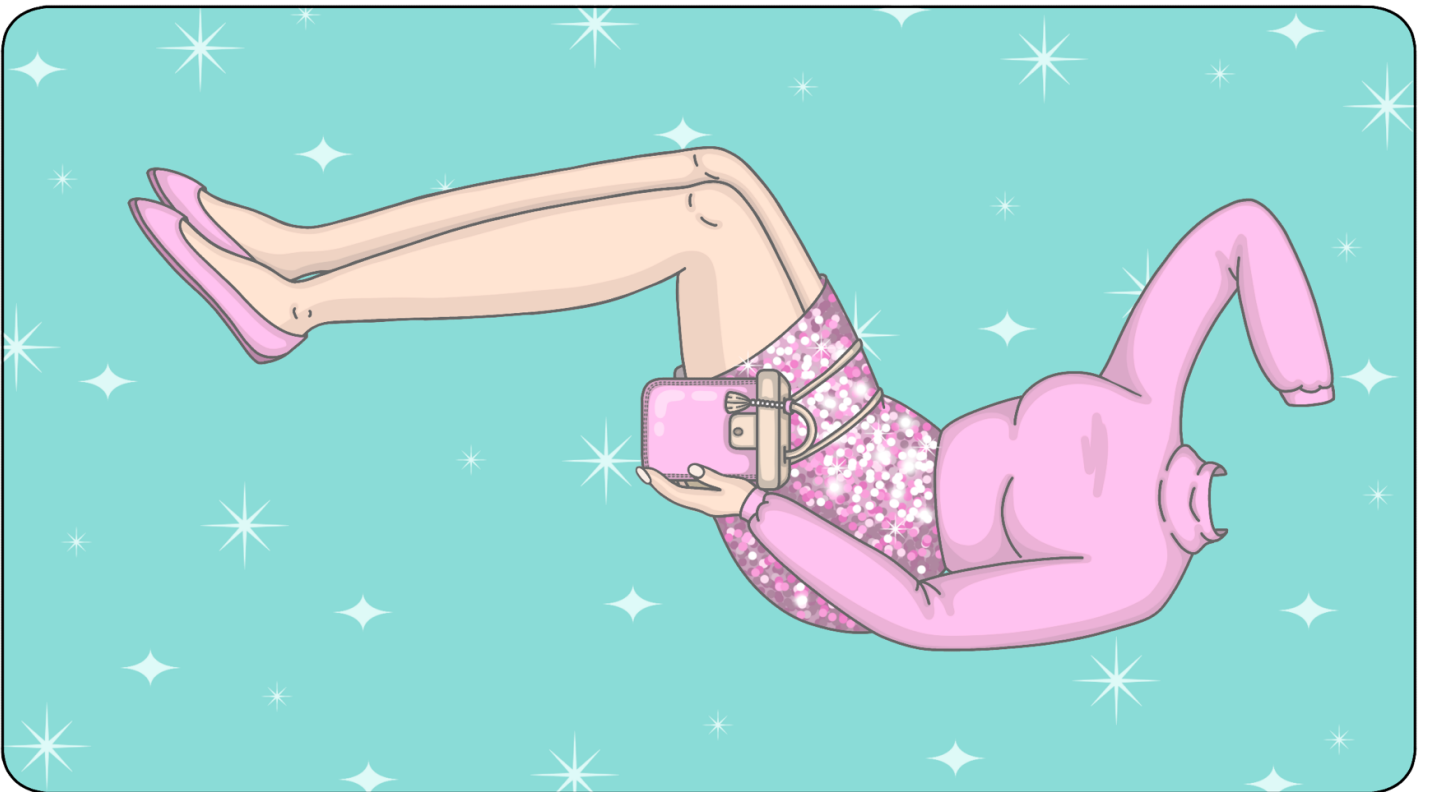
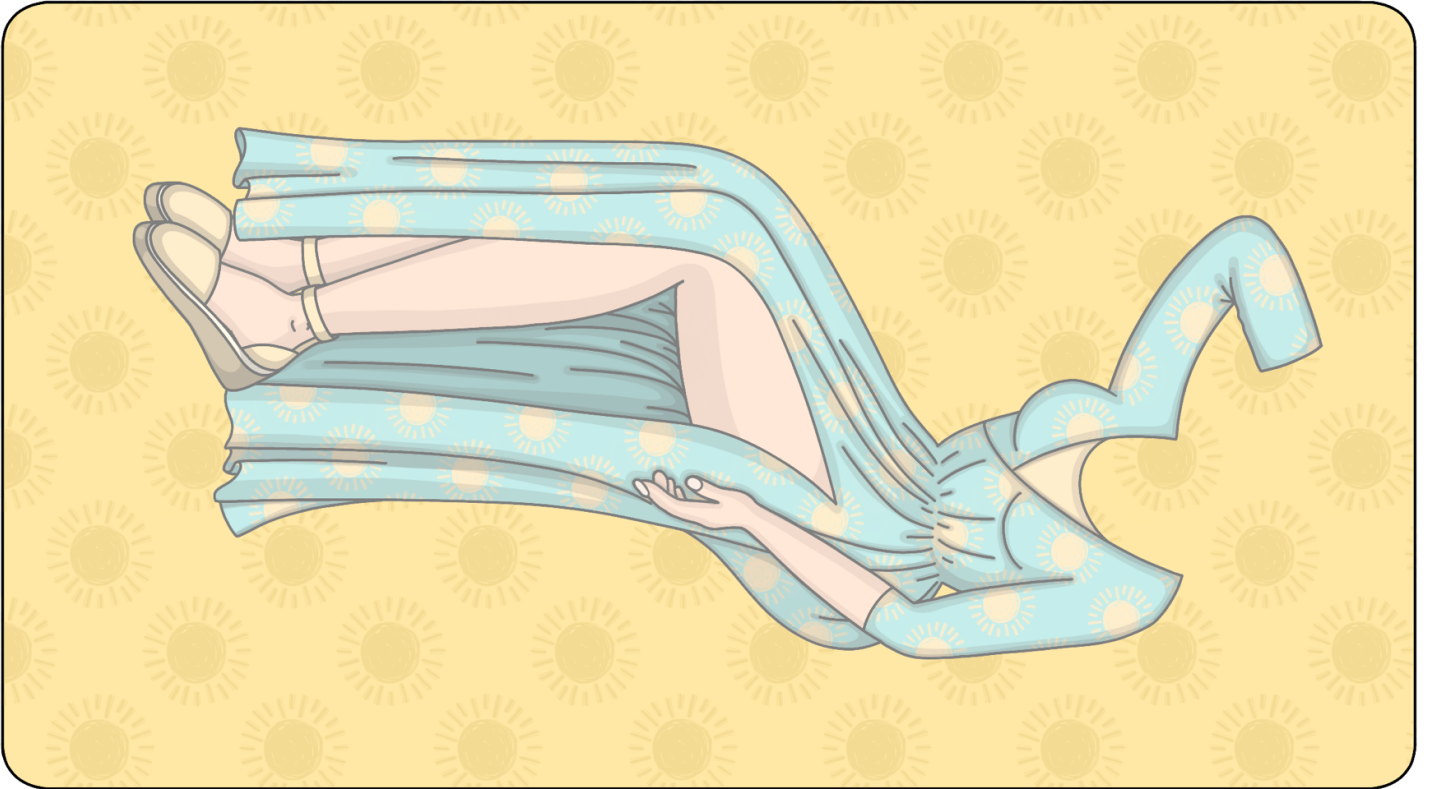
To bring your doll to life, use craft glue or double-sided tape to stick the front and back together. For a 3D effect, use double-sided foam tape.



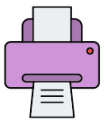
For best results, print this page on 170-220gsm matte photo paper



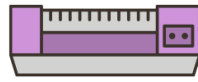
Please cut out and laminate the parts on this page for durability.



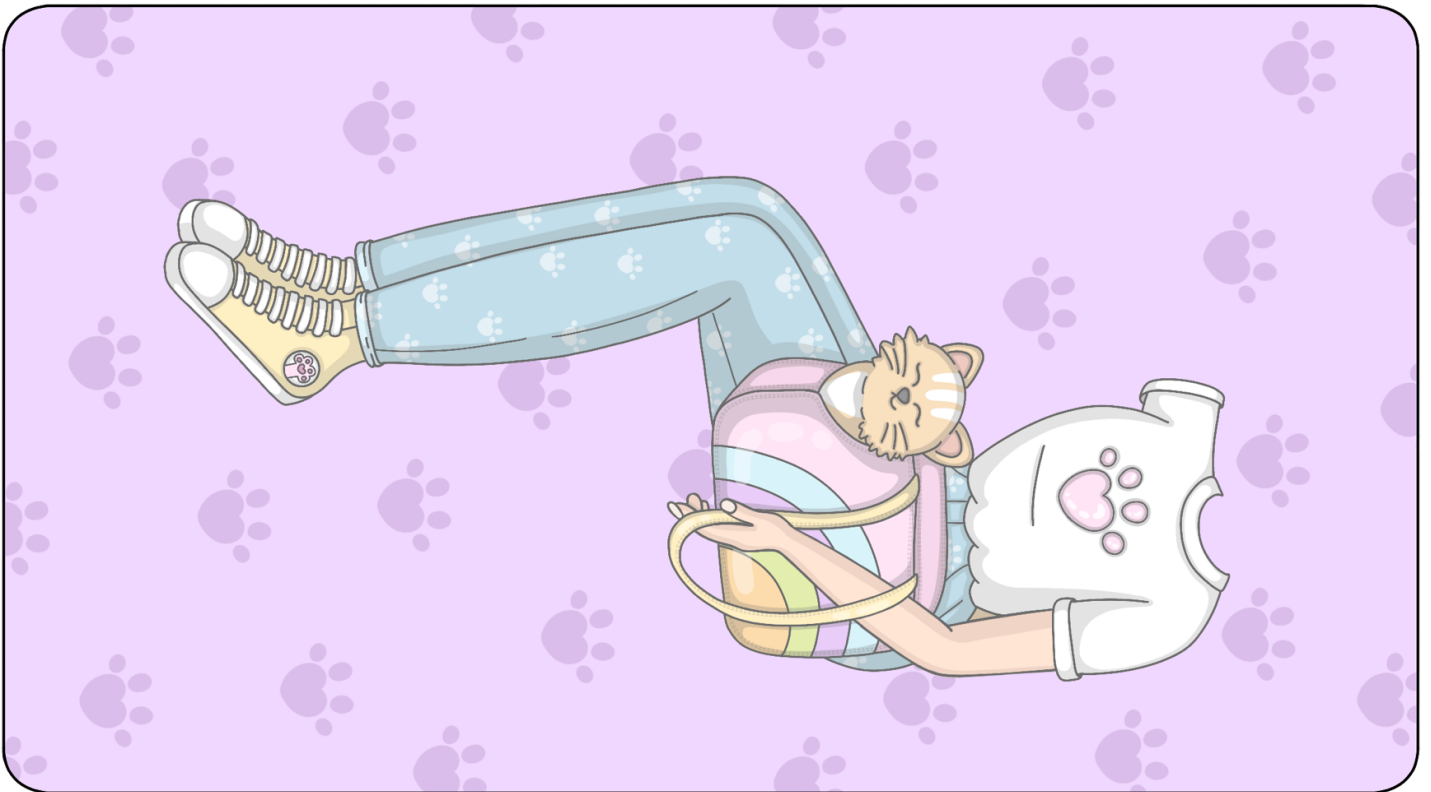
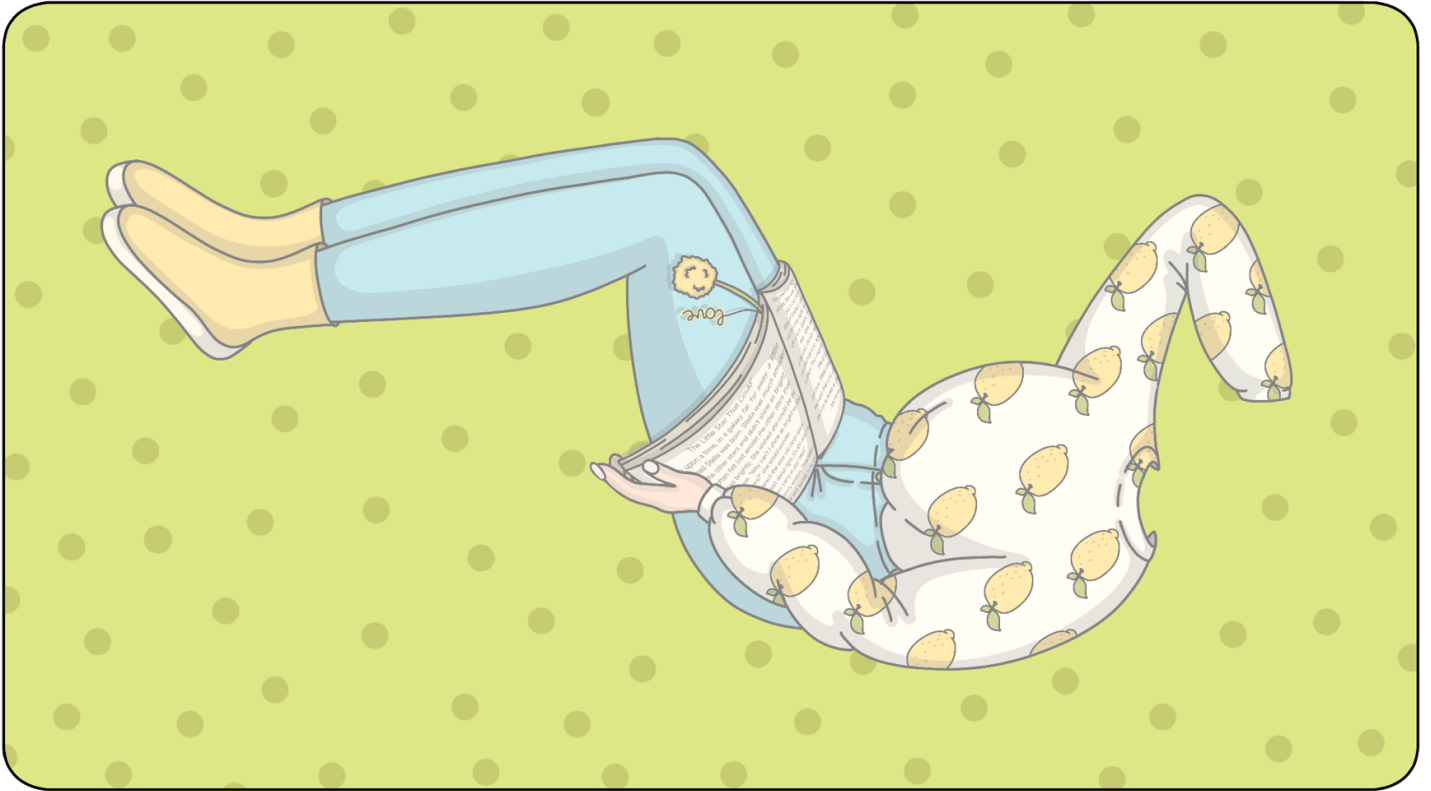
To stick the clothes to the background and doll, use double-sided tape or Velcro.



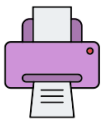
For best results, print this page on 170-220gsm matte photo paper



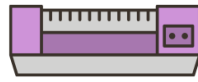
Please cut out and laminate the parts on this page for durability.



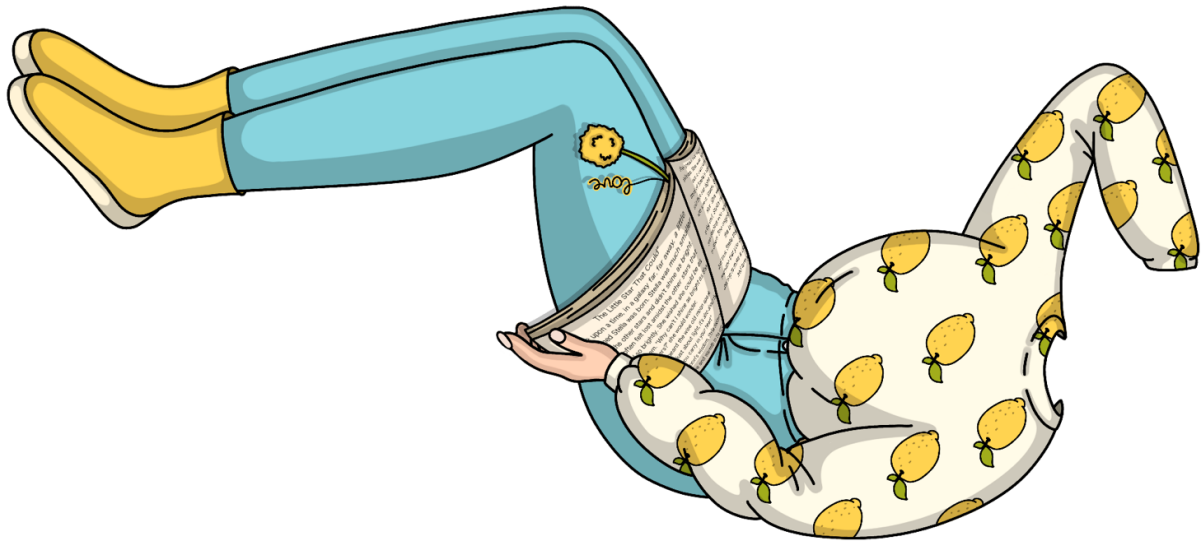
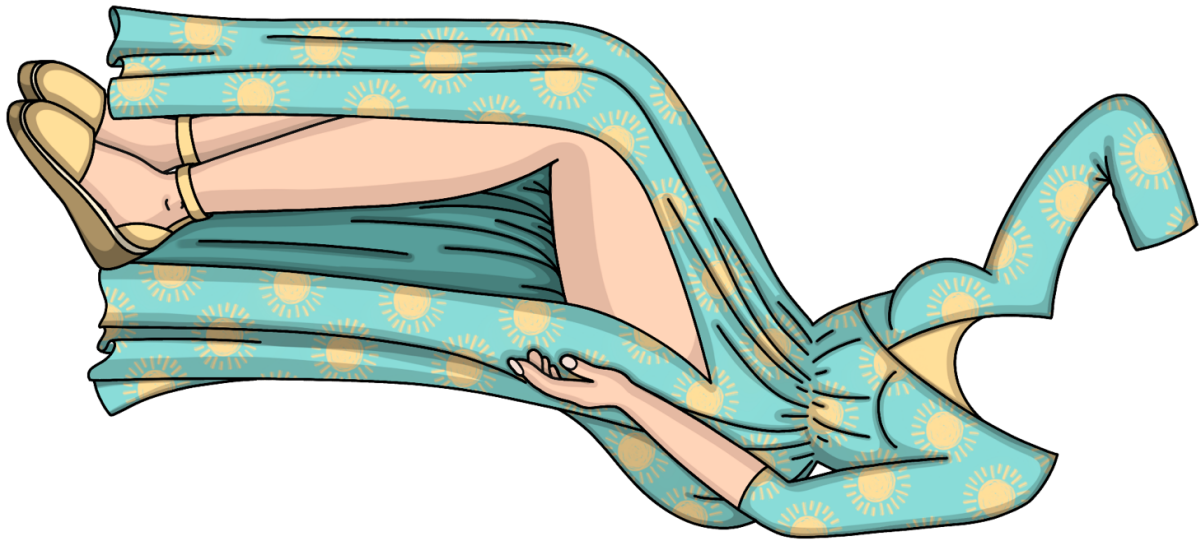
To stick the clothes to the background and doll, use double-sided tape or Velcro.



For best results, print this page on 170-220gsm matte photo paper



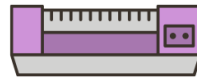
Please cut out and laminate the parts on this page for durability.



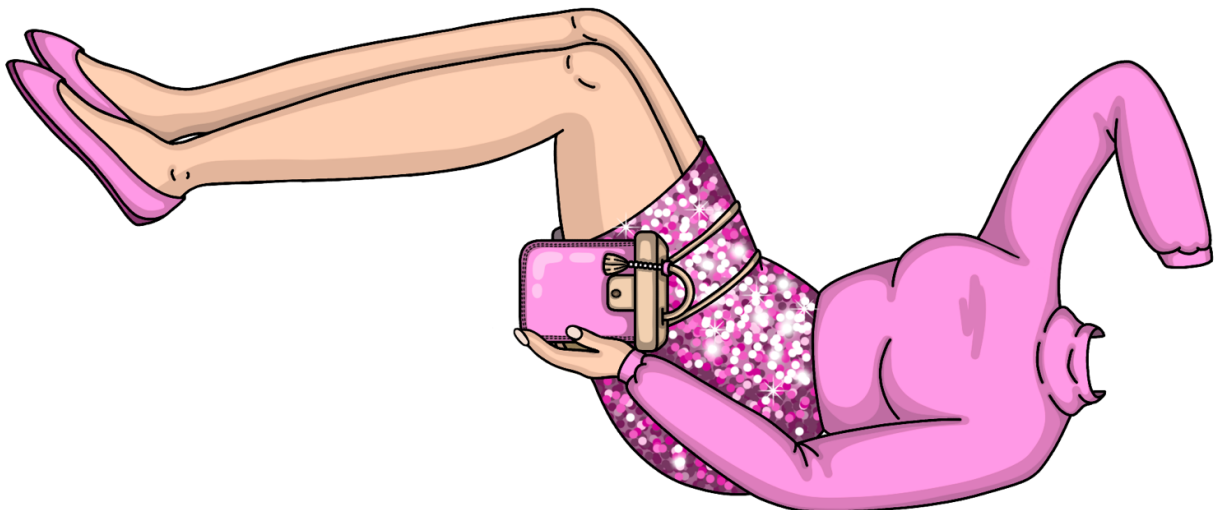
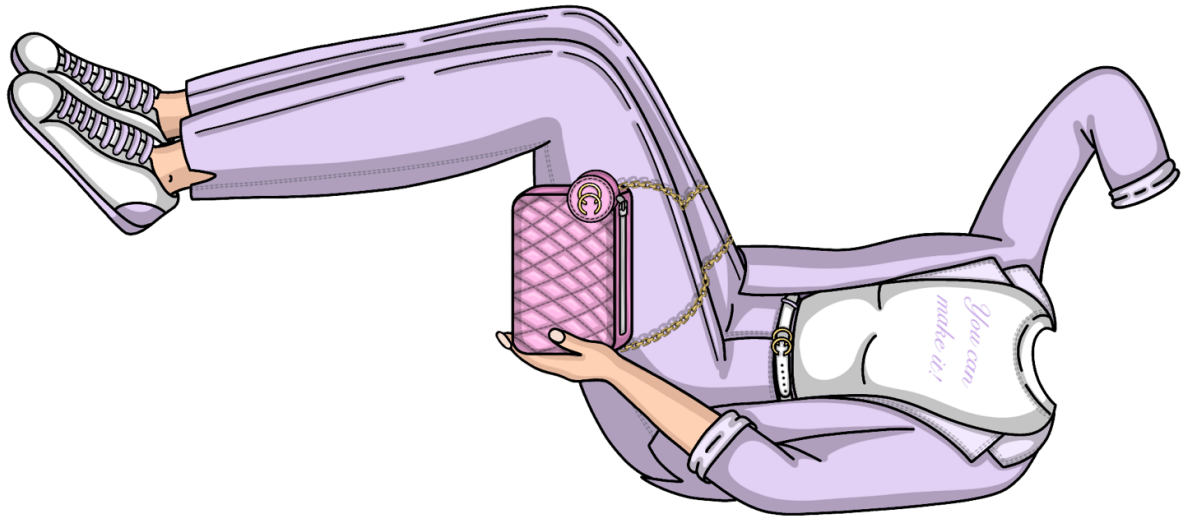
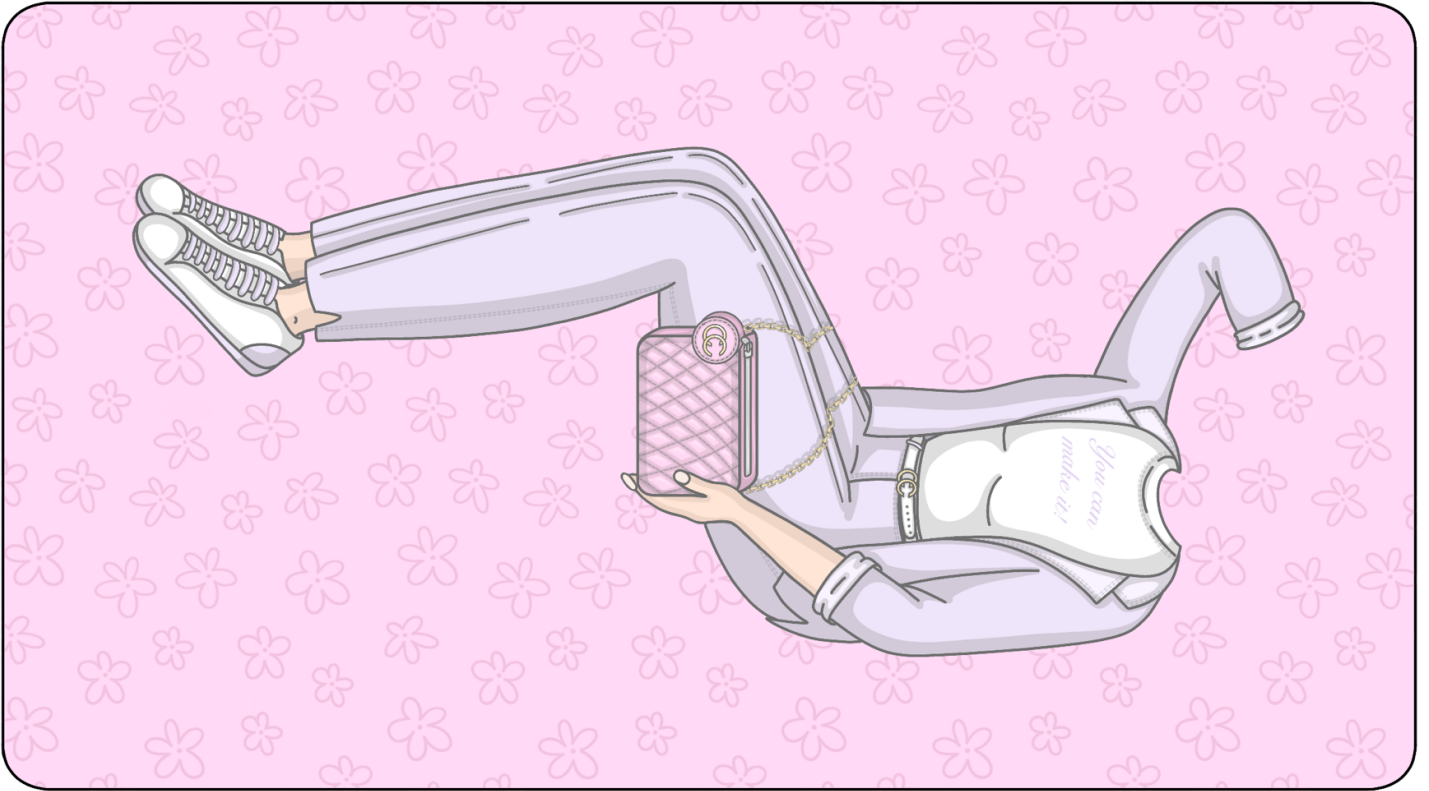
To stick the clothes to the background and doll, use double-sided tape or Velcro.



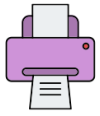
For best results, print this page on 170-220gsm matte photo paper



Please cut out and laminate the parts on this page for durability.



To stick the clothes to the background and doll, use double-sided tape or Velcro.



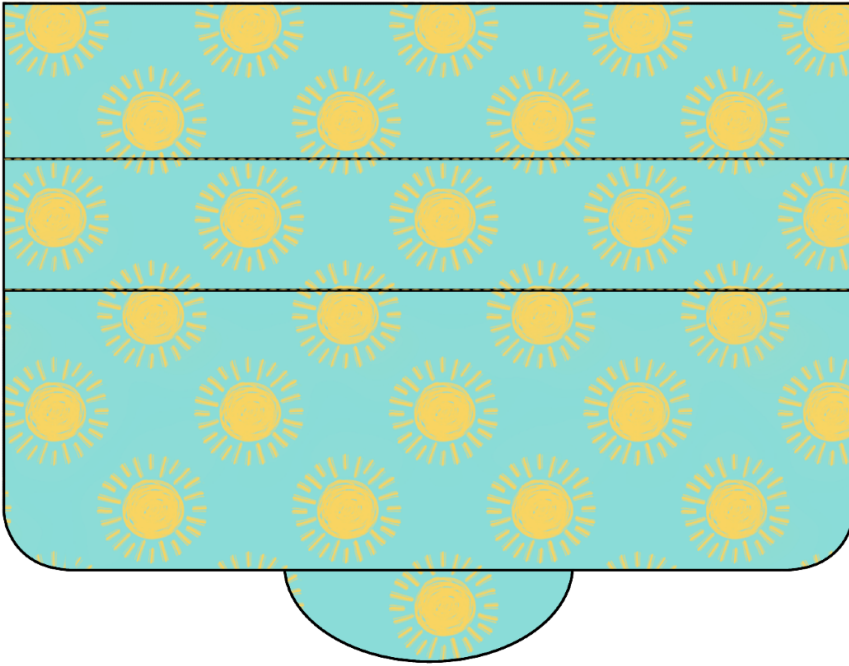
For best results, print this page on 170-220gsm matte photo paper



Please cut out this detail, but remember not to laminate it.



See the yellow dashed lines? They're your folding guides. Use a sharp object and a ruler for a precise fold.



KATE
MADE[©]

Usage Terms: These illustrations are copyright protected, meant solely for your personal enjoyment. Please note, any commercial use, resale, or distribution in any form is legally prohibited.